

# Webinar: Sharing your COVID-19 data with the CITF

David Buckeridge, MD PhD FRCPC  
Scientific Lead | Data Management and Analysis, CITF Secretariat



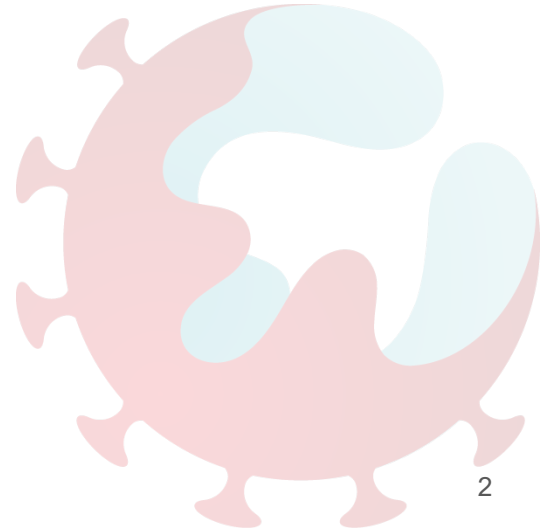
**COVID-19 IMMUNITY  
TASK FORCE**

November 27<sup>th</sup>, 2020

# Outline

---

- Background on CITF and data sharing
- Process for sharing your (meta)data with the CITF
- Governance of data managed by CITF



# The COVID-19 Immunity Task Force

---

## Helping to Guide Canada's Epidemic Response

*Catalyze, support, and harmonize* the design and rapid implementation of population-based studies

*Generate* reliable estimates of SARS-CoV-2 immunity, overall and in priority populations across Canada

*Support* laboratory studies to establish the advantages and limitations of immunity testing and related technologies

*Generate* practical insights into the use and interpretation of these tests



## Background: CITF Mandate

---

*“to track the spread of the virus in both the general population and priority populations in Canada. [...] to shed light on immune responses to SARS-CoV-2 in a diversity of communities, age brackets, populations, and occupational groups across the nation”*

– CITF

*“to support study implementers across a core set of common logistical challenges ... questionnaire elements, data management, data structures, data models, and data transfers”*

*“to provide regular scientific updates on the state of serologic testing, results from studies, and the evolving understanding of immunity related to SARS-CoV-2”*

– CITF Secretariat

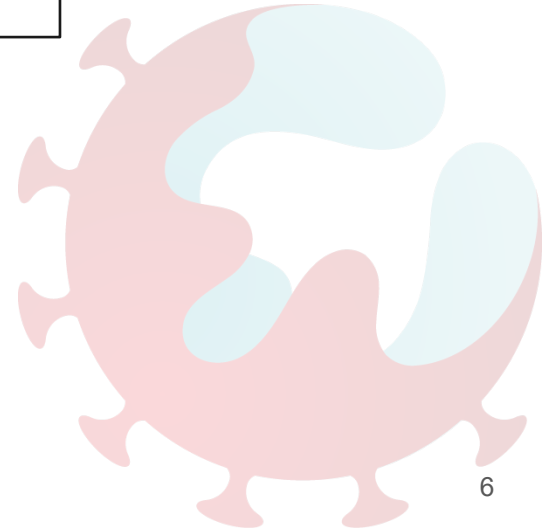
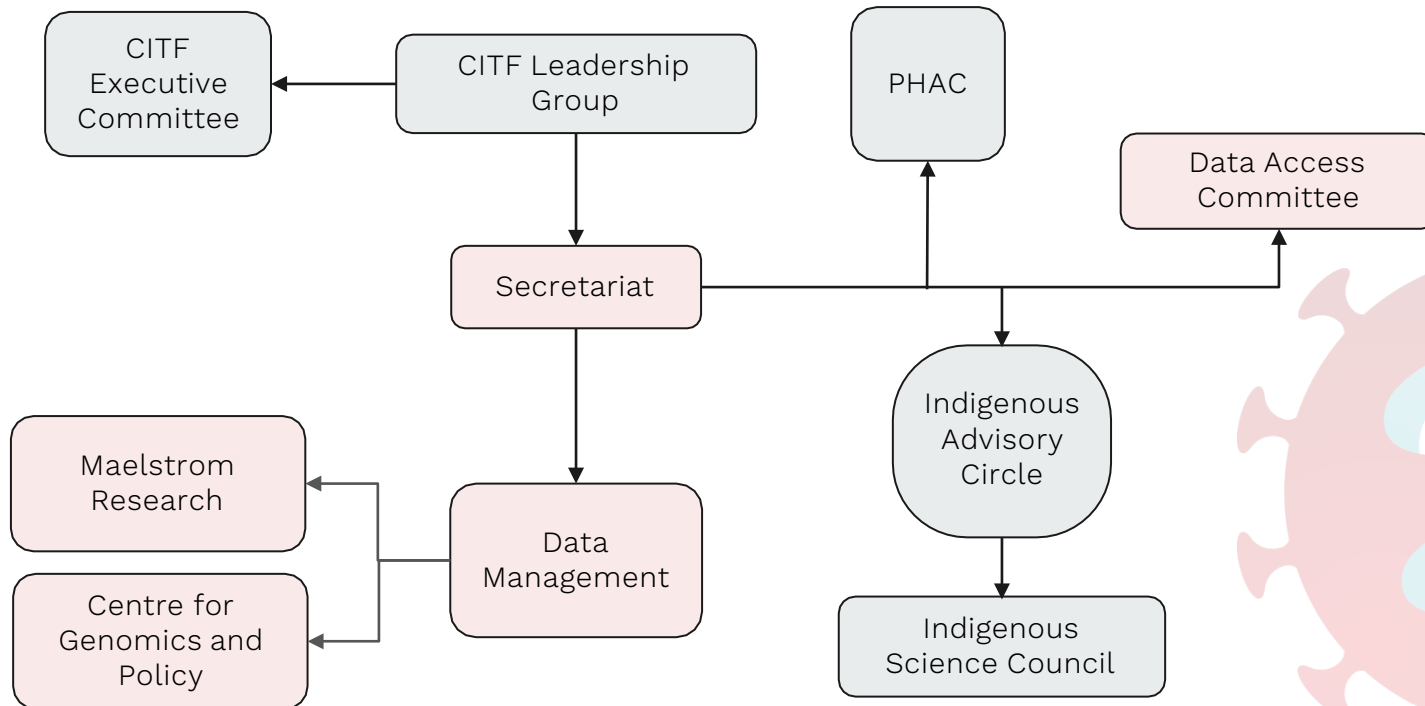
# Background:

## CITF Principles

- Partner in all of its work with stakeholders
  - Identify priority issues related to serologic testing and its application
  - Promote rigorous gathering and **rapid sharing of data** to inform Canadians
  - Mobilize the **best science** and study designs
  - Ensure **protection of privacy** in data-gathering
- Enhance cost-efficiencies and avoid unnecessary duplication
  - **Rapid reporting of results** to key audiences, including decision makers and interested stakeholders
  - Adhere to best practices regarding any authorship of scientific publications
  - Liaise with relevant entities in other countries and with international agencies
  - Communicate with openness and **transparency**



# CITF Organizational Structure



# Benefits of sharing COVID-19 data

---

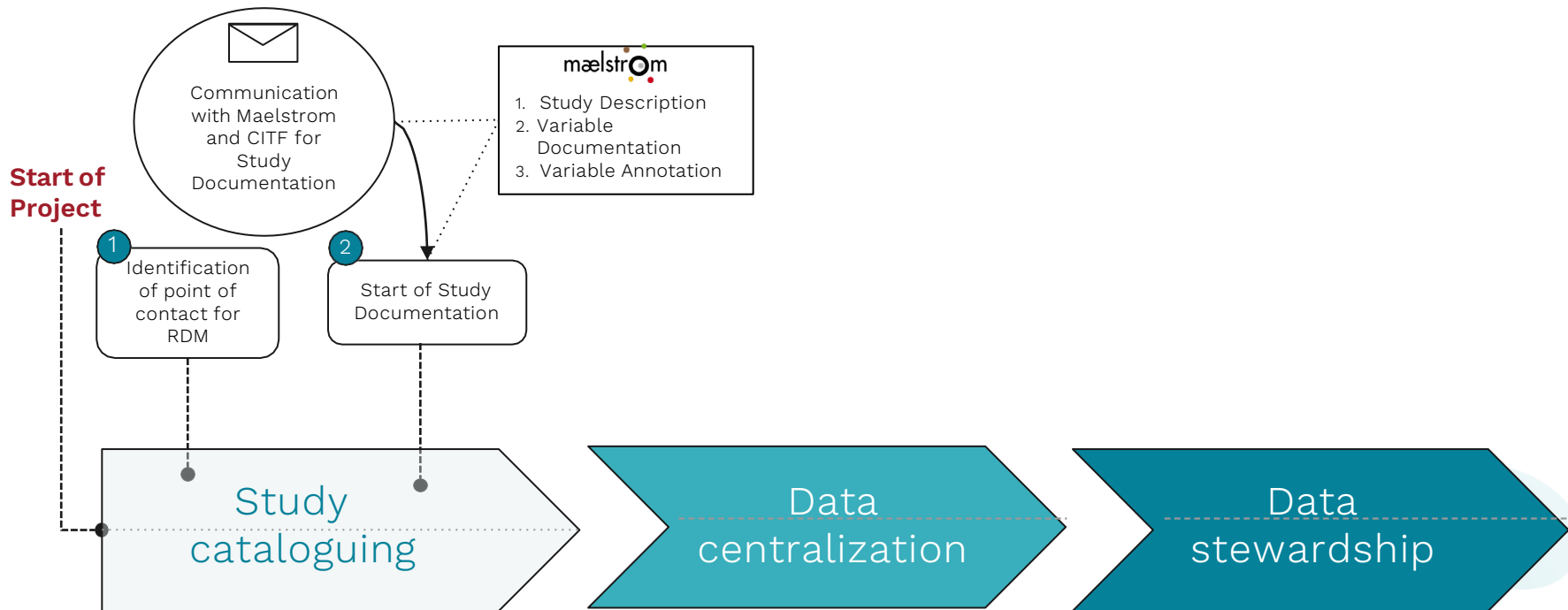
- Sharing data in general and for COVID-19
  - Over 30 leading publishers have committed to making all COVID-19 publications and data accessible in PubMed Central
  - Contributes to openness and transparency in COVID-19 research efforts
  - Funders increasingly expect sharing to obtain maximal value (upcoming Tri-Council policy)
  - Experience, frameworks and tools exist to enable legal and ethical sharing of research data
- Benefits in the context of CITF
  - Enable cross-study analyses of Core Data Elements to inform pandemic planning efforts
  - Potential to enrich individual CITF studies through comparative analyses
  - Allows CITF data to be contributed to international COVID-19 research efforts





# Process for Sharing (meta)data with CITF





# Study Metadata to be Catalogued

## 1. Study description

Information:  
Targeted population(s),  
and data collection  
events.

Description will be done  
using published papers  
and study websites, and  
subsequently validated  
with PIs.

## 2. Variable documentation

Information:  
Data dictionaries and  
questionnaires.

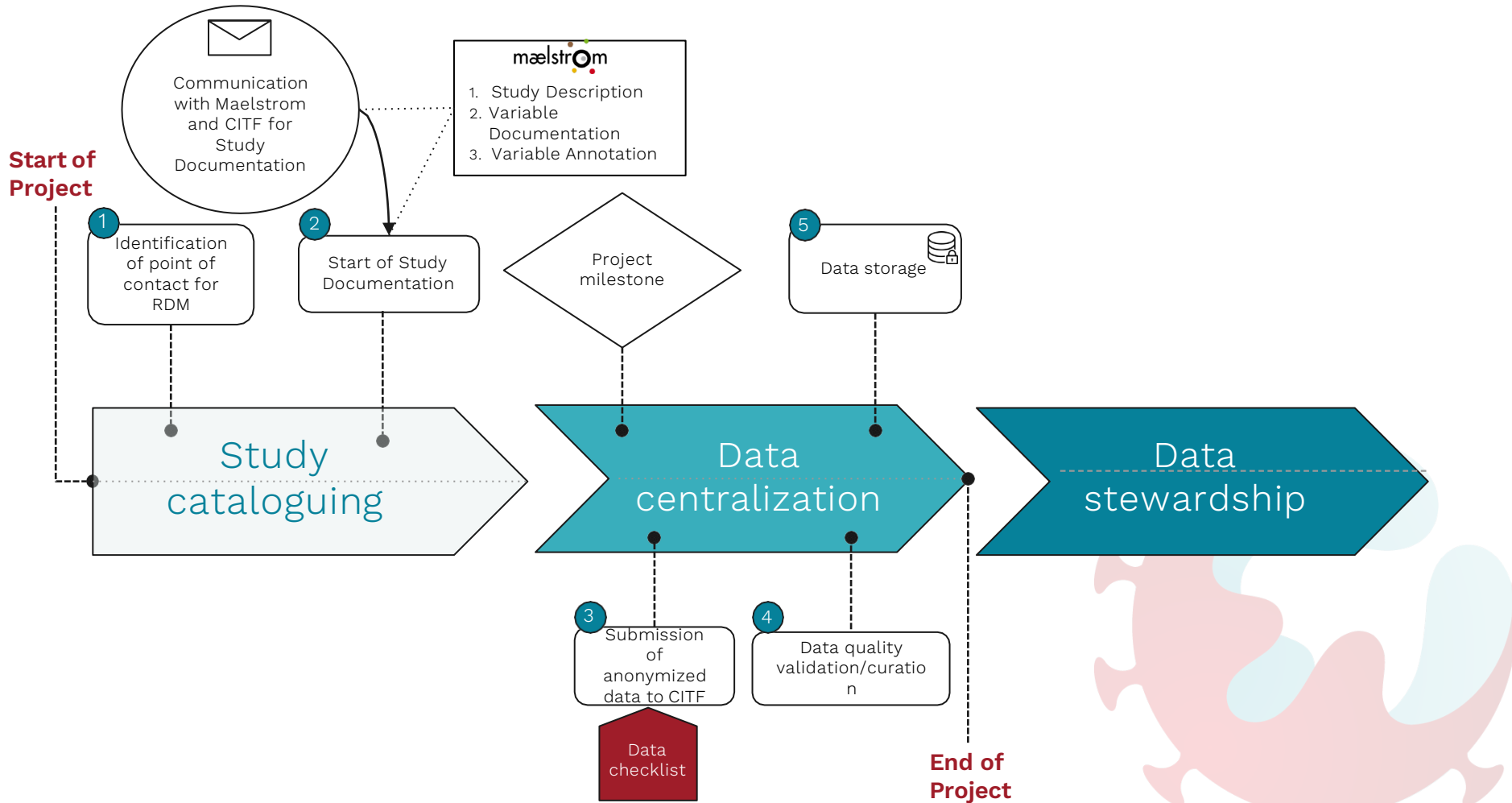
Variables should have a name,  
a label, and if applicable,  
codes and labels for  
categories.

## 3. Variable annotation

General study  
characteristics, targeted  
populations, data  
collection events, and  
data dictionaries will be  
made available on  
Maelstrom's website.



The screenshot shows the Maelstrom website interface. At the top left is the 'mælstrom' logo. Below it, the breadcrumb 'Networks / CITF - COVID-19 Immunity Task Force' is visible. The main heading is 'CITF - COVID-19 Immunity Task Force'. Below the heading is the logo for the COVID-19 Immunity Task Force, which consists of a stylized globe with a red and blue color scheme and the text 'COVID-19 IMMUNITY TASK FORCE'. At the bottom of the screenshot, a small line of text reads: 'The COVID-19 Immunity Task Force (CITF) was launched to track the spread of the virus in both the general population and priority populations in Canada.'



# Core Data Elements to be Shared

Core data elements identified in six domains by Task Force:

- Demographic
- COVID-19
- Symptoms
- Exposure
- Health & Health behaviours
- Laboratory

Standard encodings defined for data elements:

- Data model: CDISC
- Laboratory: LOINC
- Other: align with international efforts

CITF Domain	Visit	#	Element	Question	Type	Technical specs
DEMOGRAPHIC	Baseline	1	Date of interview	Date of interview	Date	DD/MO/YR
DEMOGRAPHIC	Baseline	2	Age	What is your age	Numerical	YEARS
DEMOGRAPHIC	Baseline	3	Sex	What was your assigned sex at birth	Categorical	MALE/FEMALE/PREFER TO SELF-DESCRIBE/PREFER NOT TO ANSWER
DEMOGRAPHIC	Baseline	4	Sex	What is your sex now	Categorical	MALE/FEMALE/PREFER TO SELF-DESCRIBE/PREFER NOT TO ANSWER

CITF Domain	#	Element	Type	Technical specs
LABORATORY	1	Test ordered	Categorical	LOINC code for test
LABORATORY	2	Device Identifier	Categorical	DI or unique trade name
LABORATORY	3	Test result	Categorical	SCT code: positive(10828004) / negative (260385009)
LABORATORY	4	Test result	Numerical	mg/mL

# Data centralization: Submitting data to the CITF database

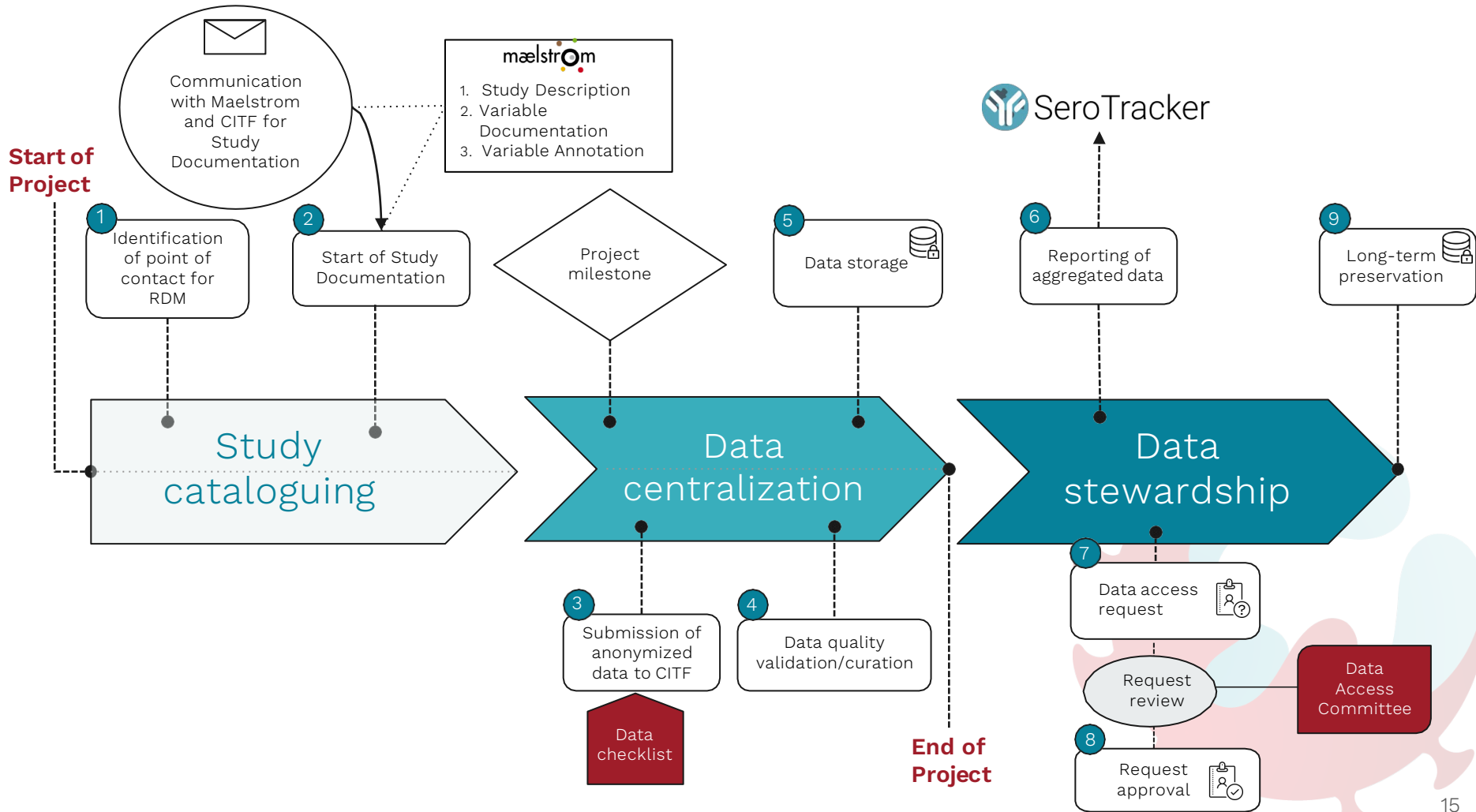
---

- Submission of Core Data Elements
  - To extent possible (e.g., retrospective samples, previous consent)
  - Secure upload & storage to CITF Secretariat
  - Timelines for data submission to be defined
- Tools available
  - Prospective and retrospective consent guidance
  - Quick guide to data sharing
  - Upload checklist





# Data Governance



# Data governance and access

---

- Data will be made available through restricted and controlled access models, depending on privacy risks
- CITF Data Access Committee will oversee equitable access procedures
- Acknowledgement of contributing studies in publications & mechanisms to facilitate collaboration with study investigators
- Centralized data will be shared with the international research community







**Thank you**



# Questions?

David Buckeridge  
[david.buckeridge@mcgill.ca](mailto:david.buckeridge@mcgill.ca)